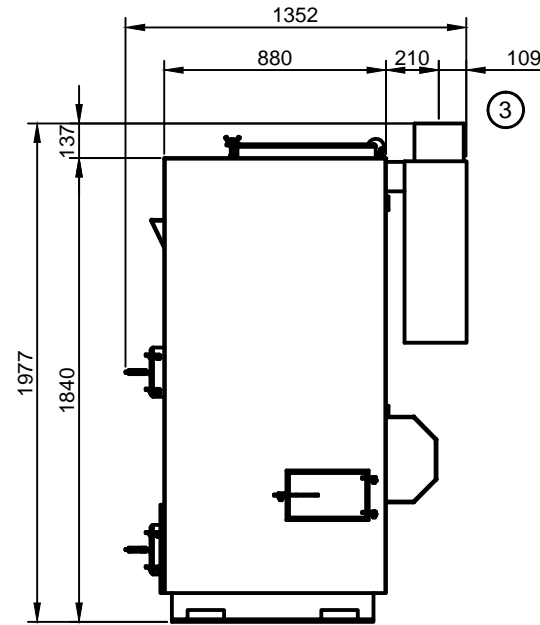
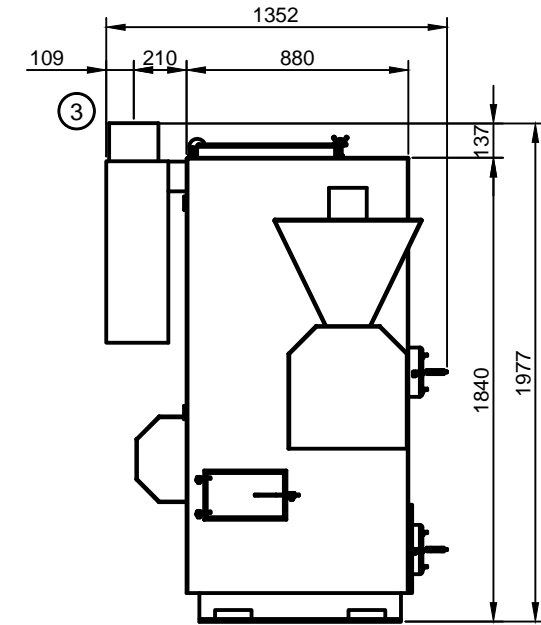


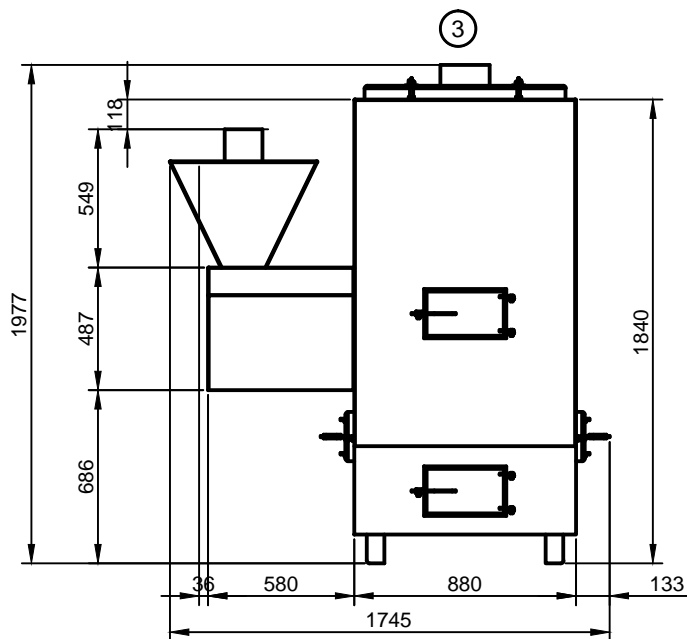
PLAN VIEW
1:30



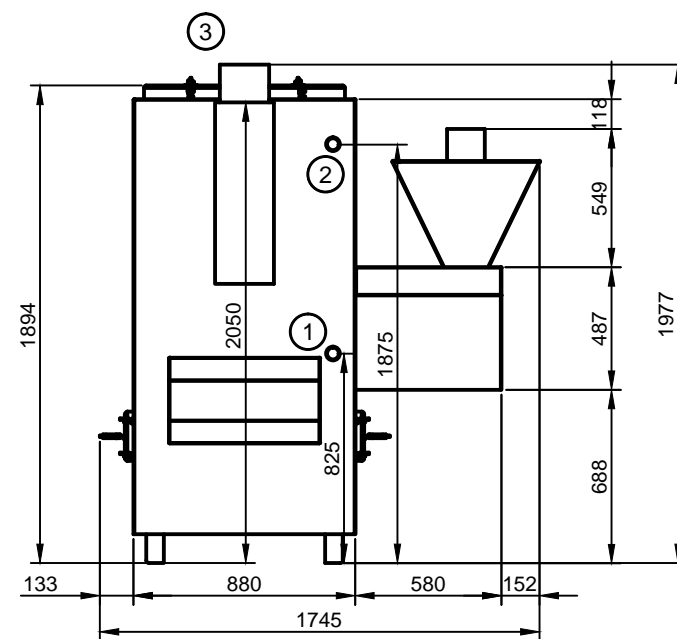
RIGHT VIEW
1:30



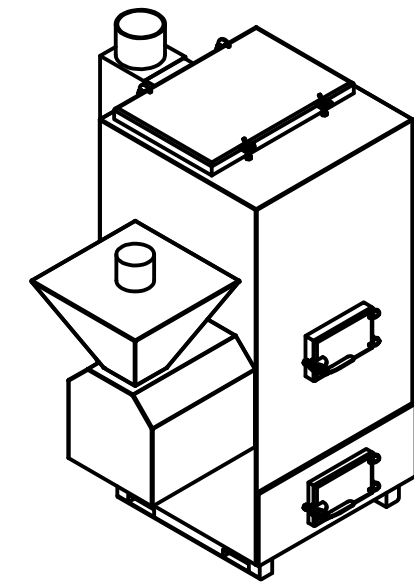
LEFT VIEW
1:30



FRONT VIEW
1:30



BACK VIEW
1:30



PERSPECTIVE VIEW
Not to scale

Equipment/Fitting Layout		
No.	Name	Description
1	Return	Return Hot Water Ø46
2	Supply	Supply Hot Water Ø46
3	Flue	Ø200
4		
5		
6		

Notes:

Nominal power:	100	kW
Operational temp.:	70-90	°C
Efficiency factor of the heating system:	80-90	%
Operating pressure of the heating system:	3	bar
Diameter of connection pipes:	40	mm
Size of the flue pipe for the boiler:	200	mm
Weight of the boiler (net):	800	kg
Weight of the pellet reservoir (net):	50	kg
El. capacity (max):	2.0	kW
Voltage of the electricity connection:	380	V
Average theoretical consumption of pellets per day:	0.01x1x24	kg/m ² /h

Manufactured by:



"GRANDEG" SIA
 Valdemara street 99a, Ainazi,
 LV- 4035, Latvia
info@grandeg.lv
www.grandeg.lv
 SWIFT: HABALV22
 Account: LV91HABA0001408034290

Equipment: BOILER	Sheet no: TURBO-100_001
----------------------	----------------------------

System: MECHANICAL	Scale: 1:30
-----------------------	----------------

Module Type-No: GD-TURBO-100
